



Tinned CCAA Airdac CNE & SNE

Copper Anti-Theft House Service
Connection Cable



Standards

- NRS 110, ASTM B566-04a, SANS 1507-6 As far as applicable.
- Type tested.

Cable Description

Combined Neutral and Earth (CNE)

Phase, neutral and earth conductors are made up of the metallurgical processed tinned copper clad aluminium alloy (CCAA). The phase core is XLPE insulated and Bare Neutral and Earth strands concentrically arranged around the insulated Phase core. Polyethylene (LLDPE) sheathed cable available with or without communication cores.

Separate Neutral and Earth (SNE)

Phase, neutral and earth conductors are made up of the metallurgical processed tinned copper clad aluminium alloy. Polyethylene Insulated Neutral and Bare Earth strands concentrically arranged around the XLPE insulated Phase core. Polyethylene (LLDPE) sheathed cable available with or without communication cores.

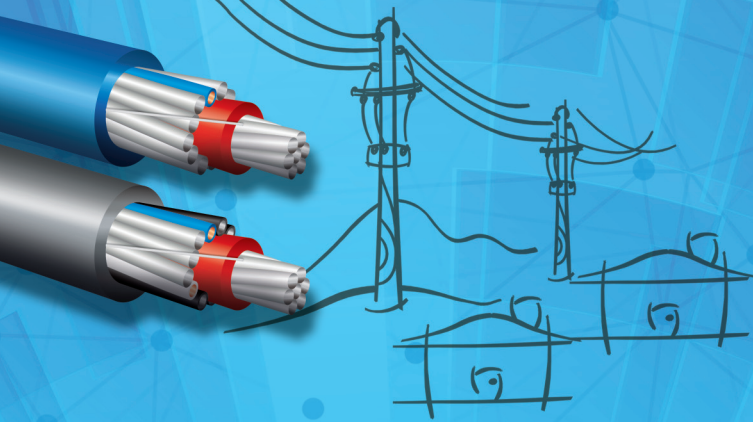
Application Information

For House Service connection:

- The cable is designed to be suspended in air.
- Tamper and Vandal proof – unauthorised access to phase inhibited by the concentric layer.
- **Zero scrap value.**
- Outer sheath can be any approved colour as per SANS 1507 for easy identification.

Properties

Cable Sizes	: CNE/SNE 10-16mm ² (Other Sizes may be discussed with each customer)
Temperature	: -15°C to 90°C
Voltage Rating	: 600/1000V AC
UV Resistance	: UL1581
Sheath Identification	: Grey or Yellow or Black or Blue (All colours to be confirmed on order).
Packaging	: 500m Drum (Other lengths available on request)



Tinned CCAA Airdac CNE & SNE

Copper Anti-Theft House Service Connection Cable

Technical Data

Electrical Properties

Description	10mm ² SNE	16mm ² SNE
Phase Core Resistance (DC @ 20°C) (ohm/km)	3.08	1.91
Single Phase Volt Drop (mV/A/m)	7.9	4.9
Current Rating (A)*	67	89
Symmetrical Short Circuit Rating 1 sec (kA)	0.94	1.5
Asymmetrical Short Circuit Rating 1 sec (kA)	0.44	0.73

Note : * In air with 30°C ambient air temperature and maximum conductor temperature of 90°C

Please Note : CNE - To Be Confirmed on Order.

Physical Properties

Description	10mm ² SNE	16mm ² SNE
Approximate Cable OD (mm)	14	16
Approximate Cable Mass (kg/km)	230	307

Installation Data

Description	10	20	30	40	50	Based On	
	Sag (m)					UTS* (N)	MWT** (N)
10mm ² SNE	113	450	1014	1802	2815	1000	250
16mm ² SNE	94	376	845	1502	2348	1600	400

Note :

Assumption is for worst conditions i.e. Temperature -5.5°C with wind speed of 31m/s and measure at Midspan

* UTS = Minimum Ultimate Tensile Strength

** MWT = Maximum Working Tension (Safety factor of 4)

Please Note : CNE - To Be Confirmed on Order.